



Our Story

Quare was founded in 2013 by the former management team of Metaliberica, a world leader in bathtub manufacturing. The team, who realized a spin off of a business line launched earlier in 2012, identified the value of this new product line based on a versatile material, which will revolutionize the way we furnish and decorate the bathroom.



Who we are

Today, we are a company committed to Hospitality & Retail projects from customized design and manufacturing to after-sales warranty.

*As manufacturer, we provide **shower trays solutions, worktop and wall panels**. Our differentiation is unique textures, large dimensions and great customer support.*

We manufacture in Burgos, Spain.



Understanding hotel & residential needs



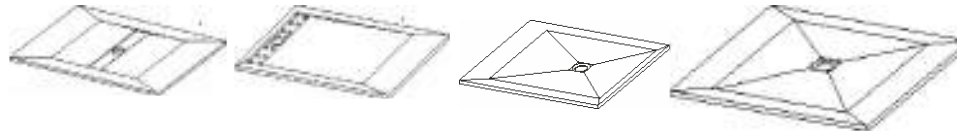
Wide range of shower trays and worktop covers



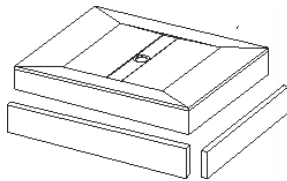
Wide range of wall panels



Wet areas expertise



Shower trays
4 families - 5 textures



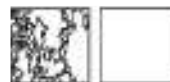
Skirting Board
5 textures



1 material



Panels
5 textures



Worktop
3 families – 2 textures

Quality in process & detailed finishes



Customized solutions



Solutions for bathtub replacement



Reduced mobility solutions



Outsized projects



Affordable luxury



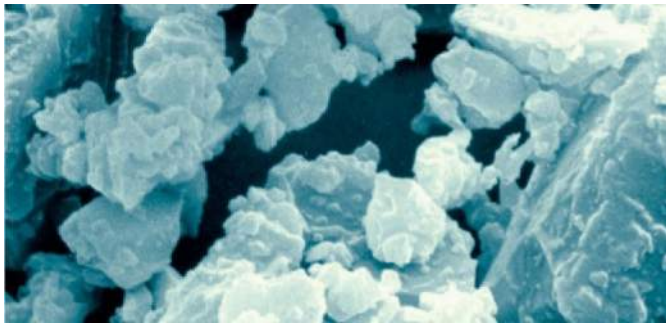
We offer solutions for boutique hotels as well as large corporate chains



Product Composition



Natural Minerals



+

Polyester Resin



Additives



Product properties



- 1 *Antislip Class B according to DIN 51 097 – appropriate for private and public usage*
- 2 *UV resistant*
- 3 *Very low noise propagation: 20 to 30 mm thickness (7 to 8 times thicker than 3,5 mm enamelled shower trays)*
- 4 *Rigidity < combination of mineral materials and heavy thickness*
- 5 *Nice touch < warm material + nice feeling*
- 6 *Easy to clean and maintain*

Colouring

- *High versatility in colours (including RAL finishes, available upon request)*
- *Smooth and nice touch*
- *In case of knock, the potential damage area is limited to the point of knock*
- *Highest resistance to scratches*

STANDARD COLOURS



RAL COLOURS



upon request

SPECIAL COLOURS



Textures



RELIEF PLUS (Slate)



SERENITY (Granite)



LISSE (Smooth)



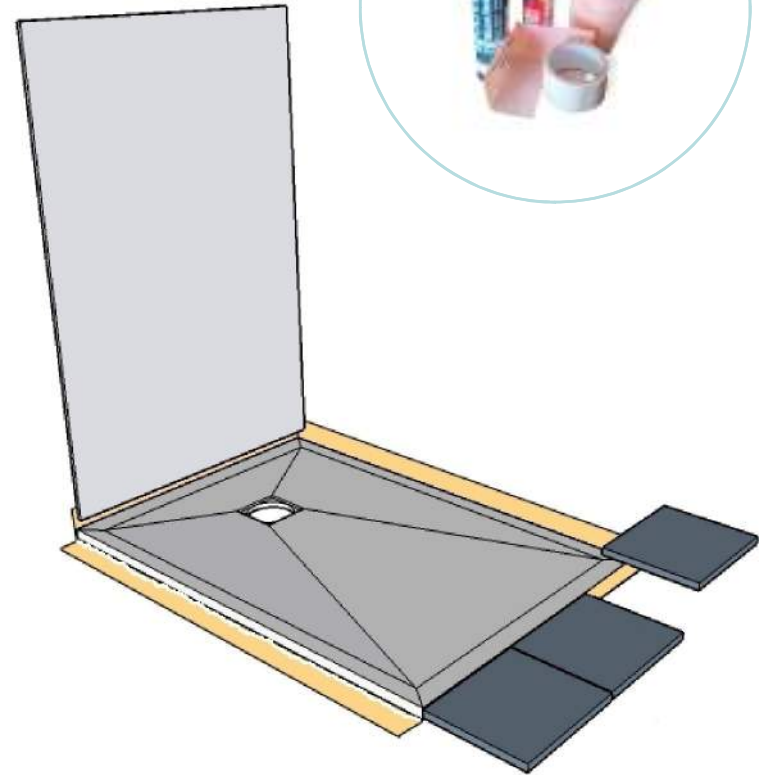
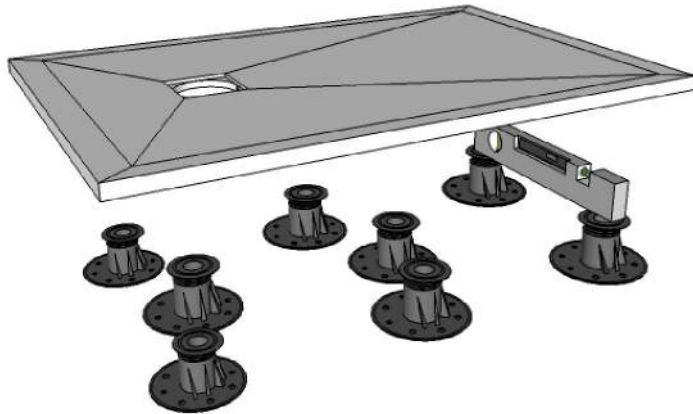
AUTHENTIC (Wood)



STYLE (Leather)



Maintenance and installing solutions



Our Arguments



- 1 *Made-to Measure (your size request is what we will deliver) with fast shipping*
- 2 *Special cuts -to fit your shower area-, available*
- 3 *Versatily in modern textures and colours to harmonise with your bathroom tiles, walls and furniture*
- 4 *Range of products in same material, texture and colour: Shower trays, worktops and wall panels – Interior designers love it*
- 5 *High stability, and rigidity*
- 6 *Easiest complete solution to replace bathtub (shower tray + panel)*
- 7 *Hardness similar to enamel and higher than Corian, marble, granite and acrylic*
- 8 *Easy to install, maintain and repair*
- 9 *“Great product to work with” for sales people in showroom and for interior designers*
- 10 *No need to stock for distributors*

Our markets

1. *Retail in France and Germany*
 - ✓ *More than 300 active customers*
 - ✓ *Present in more than 150 showrooms*
2. *Hotel projects worldwide: France, Switzerland, Spain...*
3. *Our products are present at Jean Nouvel projects and others*





Paseo Moret, 9. E-28008 Madrid, Spain

www.quaredesign.com